

## Emergency Lighting

All blade-type units will be equipped with pictograms screen-printed on a transparent 10 mm thick edge, mounted on accessories (recessed frame or housing) made of steel coated with epoxy paint. Color can be customized according to the client's request.

A white finishing film must be placed at the back of the blade units to conceal the pictogram from the reverse side (except for double-sided versions) and to ensure a better aesthetic finish.

All emergency exit units are also available in dual-function, BAEH, or DBR versions.

The self-contained emergency units will be of the SATI blade type, ceiling recessed or wall-mounted surface installation, in accordance with the integration plan, with an assigned luminous flux of 45 lumens for 1 hour, from the brand BEHAR Sécurité, SPARK series, type SPEP45 (ref: 74200), or equivalent.



Areas with low ceiling height will be equipped with blade-type units from the brand BEHAR Sécurité, type SPE1P45 (ref: 74201), featuring an 80 mm high pictogram.



Depending on the area, wall-mounted blade units from the same SPARK series, type SPAM45 (ref: 74204), may be installed.



Depending on the area, ceiling-mounted blade units from the same SPARK series, type SPAP45 (ref: 74202), may be installed.



Depending on the area, wall pendant-mounted blade units from the same SPARK series, type SPPM45 (ref: 74206), may be installed.



Depending on the area, wall flag-mounted blade units from the same SPARK series, type SPDM45 (ref: 74208), may be installed.

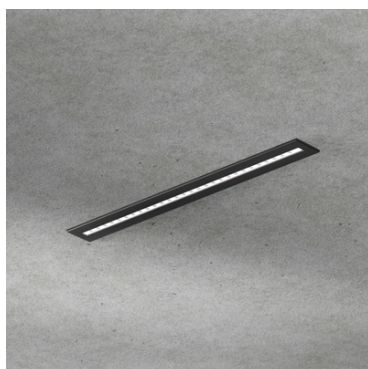


In areas with high ceilings, blade-type flag pendant units from the SPARK series will be provided, with recessed electronics of type SPEPFI45 (ref: 74314) or surface-mounted type SPAPFI45 (ref: 73318). The length of the suspension cable will be determined upon request based on the needs of each area and the required drop height.



## Ambient lighting

The ambient self-contained units will be recessed ceiling-mounted, from the brand BEHAR Sécurité, SPARK series, type SPEP400 (ref: 74223) or equivalent. With an assigned luminous flux of 360 lumens in non-maintained mode, their dimensions and recessing measurements will be identical to those of the recessed edge emergency exit units.



Depending on the area, wall-mounted blade units from the same SPARK series, type SPAM400 (ref: 74225), may be installed.



Depending on the area, ceiling-mounted blade units from the same SPARK series, type SPAP400 (ref: 74224), may be installed.





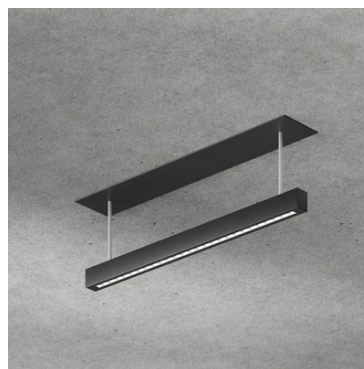
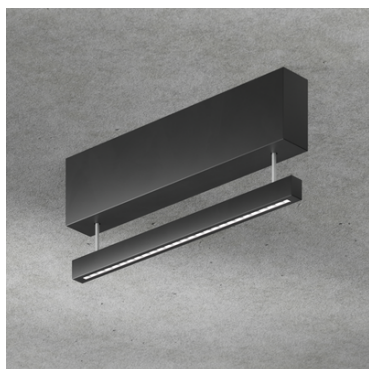
Depending on the area, wall pendant-mounted blade units from the same SPARK series, type SPPM400 (ref: 74219), may be installed.



Depending on the area, wall flag-mounted blade units from the same SPARK series, type SPDM400 (ref: 74226), may be installed.



In areas with high ceilings, blade-type suspension cable units from the SPARK series will be provided, with recessed electronics of type SPEPFI400 (ref: 74315) or surface-mounted type SPAPFI400 (ref: 74320). The length of the suspension cable will be made to order based on the requirements of each area and the necessary drop lengths.



## Emergency lighting

All blade-type units will be equipped with pictograms screen-printed on a 10 mm thick transparent edge, mounted on accessories (recessed frame or housing) made of steel coated with epoxy paint. Any color can be applied upon customer request.

A white finishing film must be placed on the back of the blade units to conceal the pictogram from the opposite side (except for double-sided models) and thus achieve a better aesthetic finish.

All emergency exit units are also available in dual-function, BAEH, or DBR versions.

The self-contained units will be of the ADDRESSABLE blade type, recessed ceiling-mounted or wall-mounted surface installation, in accordance with the integration plan, with an assigned luminous flux of 45 lumens for 1 hour, from the brand BEHAR Sécurité, SPARK series, type SPEP45A (ref: 74350), or equivalent.



Areas with low ceiling height will be equipped with blade-type units from the brand BEHAR Sécurité, type SPE1P45A (ref: 74351), featuring an 80 mm high pictogram.



Depending on the area, wall-mounted blade units from the same SPARK series, type SPAM45A (ref: 74354), may be installed.



Depending on the area, ceiling-mounted blade units from the same SPARK series, type SPAP45A (ref: 74352), may be installed.



Depending on the area, wall pendant-mounted blade units from the same SPARK series, type SPPM45A (ref: 74356), may be installed.



Depending on the area, wall flag-mounted blade units from the same SPARK series, type SPDM45A (ref: 74358), may be installed.

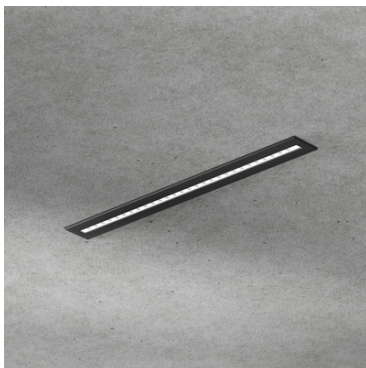


In areas with high ceilings, blade-type flag pendant units from the SPARK series will be provided, with recessed electronics of type SPEPFI45A (ref: 74327) or surface-mounted type SPAPFI45A (ref: 74317). The length of the suspension cable will be made to order based on the requirements of each area and the necessary drop lengths.



## Ambient lighting

The ambient self-contained units will be recessed ceiling-mounted, from the brand BEHAR Sécurité, SPARK series, type SPEP400A (ref: 74373) or equivalent. With an assigned luminous flux of 360 lumens in non-maintained mode, their dimensions and recessing measurements will be identical to those of the recessed edge emergency exit units.



Depending on the area, wall-mounted blade units from the same SPARK series, type SPAM400A (ref: 74375), may be installed.



Depending on the area, ceiling-mounted blade units from the same SPARK series, type SPAP400A (ref: 74374), may be installed.





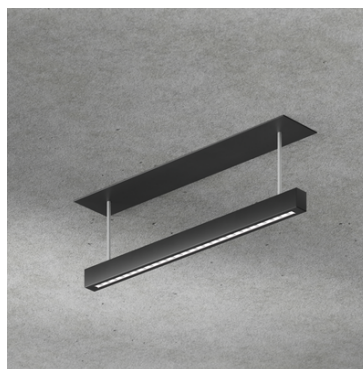
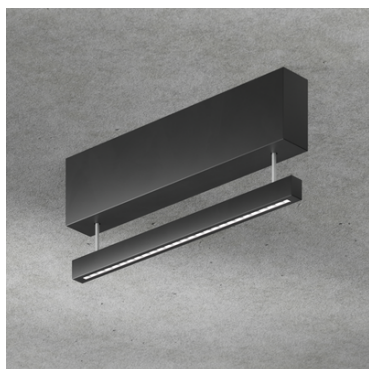
Depending on the area, wall pendant-mounted blade units from the same SPARK series, type SPPM400A (ref: 74377), may be installed.



Depending on the area, wall flag-mounted blade units from the same SPARK series, type SPDM400A (ref: 74376), may be installed.



In areas with high ceilings, blade-type suspension cable units from the SPARK series will be provided, with recessed electronics of type SPEPFI400A (ref: 74316) or surface-mounted type SPAPFI400A (ref: 74321). The length of the suspension cable will be made to order based on the requirements of each area and the necessary drop lengths.



## Emergency lighting

All blade-type units will be equipped with pictograms screen-printed on a 10 mm thick transparent edge, mounted on accessories (recessed frame or housing) made of steel coated with epoxy paint. Any color can be applied upon customer request.

A white finishing film must be placed on the back of the blade units to conceal the pictogram from the opposite side (except for double-sided models) and thus achieve a better aesthetic finish.

The units will be of the LSC blade type, recessed ceiling-mounted or wall-mounted surface installation, in accordance with the integration plan, with an assigned luminous flux of 45 lumens, from the brand BEHAR Sécurité, SPARK series, type SPEP45SC (ref: 74554) or equivalent.



Areas with low ceiling height will be equipped with blade-type units from the brand BEHAR Sécurité, type SPE1P45SC (ref: 74301), featuring an 80 mm high pictogram.



Depending on the area, wall-mounted blade units from the same SPARK series, type SPAM45SC (ref: 74304), may be installed.



Depending on the area, ceiling-mounted blade units from the same SPARK series, type SPAP45SC (ref: 74302), may be installed.



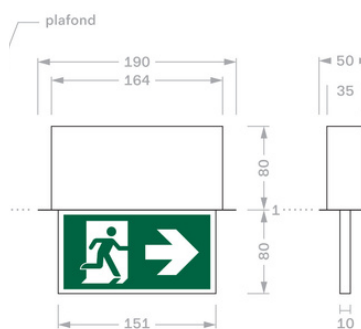
Depending on the area, wall pendant-mounted blade units from the same SPARK series, type SPPM45SC (ref: 74312), may be installed.



Depending on the area, wall flag-mounted blade units from the same SPARK series, type SPDM45SC (ref: 74306), may be installed.



In circulation areas, recessed flag blade units from the ETAL series, type ETEL2R (ref: 74042), will be provided. They must be as aesthetic and discreet as possible. To achieve this, they must have the same characteristics as the blade units from the SPARK series and the following dimensions:

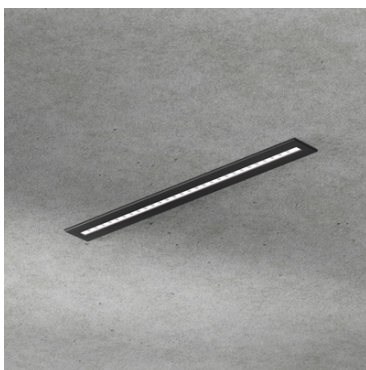


In areas with high ceilings, blade-type flag suspension cable units from the SPARK series will be provided, with recessed electronics of type SPEPFI45SC (ref: 74325) or surface-mounted type SPAPFI45SC (ref: 74324). The length of the suspension cable will be made to order based on the requirements of each area and the necessary drop lengths.



## Ambient Lighting

The ambient self-contained units will be recessed ceiling-mounted, from the brand BEHAR Sécurité, SPARK series, type SPEP400SC (ref: 74308) or equivalent. With an assigned luminous flux of 360 lumens in non-maintained mode, their dimensions and recessing measurements will be identical to those of the recessed edge emergency exit units.



Depending on the area, wall-mounted blade units from the same SPARK series, type SPAM400SC (ref: 74310), may be installed.



Depending on the area, ceiling-mounted blade units from the same SPARK series, type SPAP400SC (ref: 74309), may be installed.





Depending on the area, wall pendant-mounted blade units from the same SPARK series, type SPPM400SC (ref: 74300), may be installed.



Depending on the area, wall flag-mounted blade units from the same SPARK series, type SPDM400SC (ref: 74311), may be installed.



In areas with high ceilings, blade-type suspension cable units from the SPARK series will be provided, with recessed electronics of type SPEPFI400SC (ref: 74323) or surface-mounted type SPAPFI400SC (ref: 74322). The length of the suspension cable will be made to order based on the requirements of each area and the necessary drop lengths.

